

## MULTIFOCAL IPSILATERAL AVASCULAR NECROSIS/ METASTASIS/ OSTEOMYELITIS?

### A RARE CASE OF DYSPLASIA EPIPHYSEALIS HEMIMELICA.

Tan Shun Herng<sup>1</sup>, Mohd Fikri Bin Saari<sup>1</sup>, Khaw Yam Chuan<sup>1</sup>, Mohd Firdaus Hafni Bin Ahmad<sup>1</sup>, Dato Zulkiflee Bin Osman<sup>1</sup>

<sup>1</sup>Department of Orthopaedic & Traumatology, Hospital Pulau Pinang, Malaysia

#### INTRODUCTION:

Dysplasia Epiphysealis Hemimelica (DEH) is a rare congenital disorder of bone growth that is characterized by abnormal growth of one or more bones. DEH can present with variety of joint swelling and abnormal epiphysis, mimicking sinister diseases.

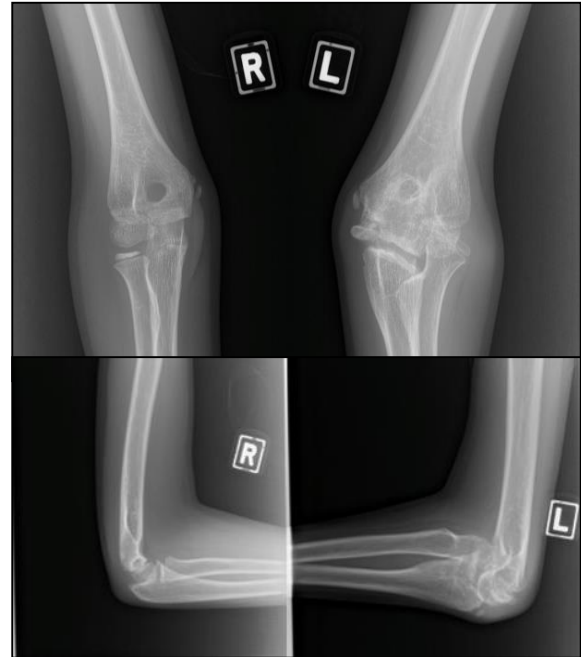
#### REPORTS:

Here we reporting a rare case of DEH in a thirteen years old boy with history of treated brain tumour, presented to us with pain and persistent swelling in his left ankle for 4 months. He had similar swelling over left elbow 4 years ago with pain resolved spontaneously.

Examination showed ipsilateral bony swellings over left shoulder, left elbow and left ankle, in which tenderness elicited only at left ankle. Range of motion was reduced at left elbow and ankle with mechanical block. Plain radiograph showed multifocal irregular ossification over left hip, left ankle, left shoulder, left elbow and left wrist. Blood investigations taken were unremarkable.



*Fig. 1: Anteroposterior view of bilateral ankle plain radiograph, showing irregular sclerotic bony mass over left ankle with adduction of ankle*



*Fig. 2: Anteroposterior and lateral view of bilateral elbow ankle plain radiograph, showing irregular ossification and bony mass over left elbow.*

Patient was treated conservatively with rest and analgesia. Regular follow up was planned with possibility of surgical intervention if his function and deformity was affected.

#### CONCLUSION:

DEH is often misdiagnosed as other bone and joint disorders due to its rarity and varied presentation, leading to delayed diagnosis and treatment.

#### REFERENCES:

1. Douira-Khomsis W, Louati H, Mormech Y, Saied W, Bouchoucha S, Smida M, Ben Ghachem M, Hammou A, Bellagha I. Dysplasia epiphysealis hemimelica: a report of

four cases. Foot Ankle Surg. 2011  
Mar;17(1):37-43.