

CARE SHOULD NOT STOP IN THE EMERGENCY ROOM: EWING'S SARCOMA OF SACRUM, A CASE REPORT

Ooi Gaik Khim^{*1}; Mohd Firdaus Bin Abdullah¹

¹ Department of Orthopedics and Traumatology / Hospital Sungai Buloh

INTRODUCTION:

Ewing's sarcoma (ES) and osteosarcoma are the most common primary malignant bone tumors that occur in children and young adults. Primary malignant sarcoma of the spine is an extremely rare case, contributing to roughly only 2.5–14.9% of all cases of bone malignancy(1). ES of the sacrum is extremely rare which encouraged us to report this case.

REPORT:

A 15-year-old girl presented with complaints of lower back pain for 1 year duration and had multiple presentations to the emergency department. It was associated with sharp, shooting pain down her left leg. She was treated with analgesics and discharged home. Overtime, the backpain worsened and she presented with acute urinary retention and symptoms of bowel obstruction. She claims the back pain was disrupting her sleep at night and has loss of weight. On examination, there was paraspinal tenderness, however there was no neurological deficit in her bilateral lower limbs. Her routine blood investigations were found to be normal, and tuberculosis (TB) workout came back negative.

A plain radiograph of the pelvis revealed lytic lesion of the left sacral ala. MRI scan revealed a large lobulated solid mass in the left side of pelvis with the epicentre of the mass seen within the left sacral foramen of S1, S2 and S3. Posteromedially, the mass extends into the epidural space of spinal canal causing severe stenosis of the canal. Computed tomography guided biopsy was performed. Histopathological examination confirmed Ewing's sarcoma.

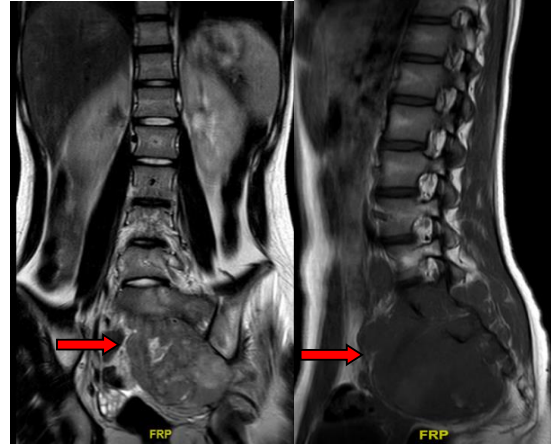


Figure 1: MRI revealed large lobulated mass in pelvis

CONCLUSION:

In conclusion, because of the rarity of the tumor, a remote familiarity may have evaded early detection thus far. Ewing's sarcoma should be suspected in children or young adults who presents with backpain.

REFERENCES:

Kamal AF, Cahayadi SD, Shihab RA, Ramang DS. A challenging diagnosis: Lesson from case series of sacral Ewing sarcoma. Vol. 94, International Journal of Surgery Case Reports. Elsevier Ltd; 2022.