

Challenges in Anatomical Restoration of Rare Windswept Pelvic Ring Injury

¹Naquiddin MJ; ¹Azira Y; ¹Hazizul HH; ¹Faizal NL

¹Orthopaedic Department, Hospital Sultanah Nur Zahirah, Kuala Terengganu, Terengganu, Malaysia.

INTRODUCTION:

Windswept pelvic ring injury is a rare pelvic injury, described as a combination of ipsilateral lateral compression (LC) & contralateral open book AP compression (APC). Anatomical pelvis restoration is a challenge as this fracture consists of 2 different deforming forces on each hemipelvis. Understanding the deforming force may assist in achieving reduction & fixation.

REPORT:

This is a case of a 37 years old female who was involved in a motor vehicle accident, sustained pain & unable to bear weight. Patient was stabilized according to ATLS protocol. CT imaging showed bilateral superior and inferior pubic rami fracture, bilateral sacroiliac joint disruption with right side superior displacement & right sacral fracture. Distal femur supracondylar pin traction over was applied while awaiting for definitive fixation.

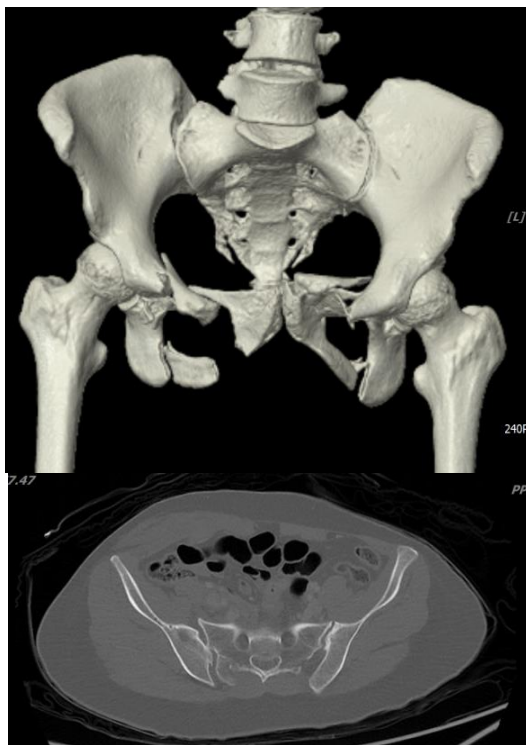


Figure 1: Preoperative CT Pelvis

Patient underwent Right Sacroiliac Joint Screw Fixation, followed by Bilateral Anterior Column plating. Upon follow-up at 3 months post-op, patient had started ambulating well without instability or pain.



Figure 2: 3 months post-op radiograph.

CONCLUSION:

Windswept pelvic ring injury is an unstable pelvic fracture and good anatomical restoration of pelvis allow stable healing, which reduces post-injury complications & good ambulation.

REFERENCES:

1. Vaidya R. et al., Sequential reduction and fixation for windswept pelvic ring injuries (LC3) corrects the deformity until healed. *Int. Orthop*, 2013.
2. Burgees A. et al., Pelvic Ring Disruptions: Effective Classification System and Treatment Protocols. *The Journal of Trauma: Injury, Infection, and Critical Care*, 1990.